



Floral Park Art League

NEWSLETTER

November 2011

December Demo - Rob Silverman

...Pg1

Howard Rose November Demo

How to Critique Yourself ...Pg 2

FPAL Upcoming Events

Directions to the American Legion Hall

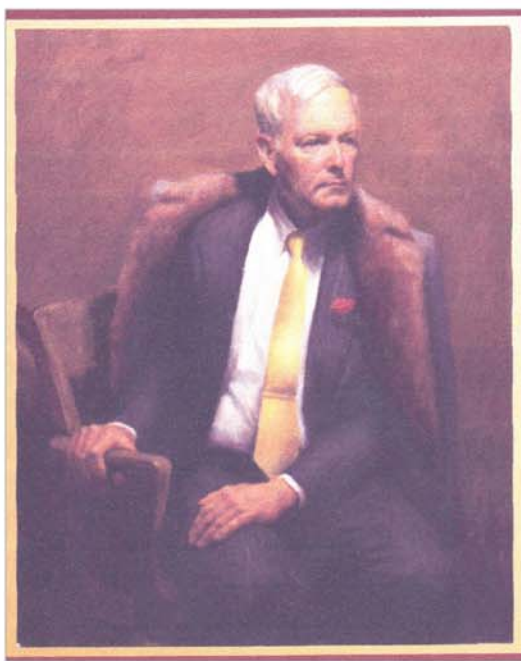
FPAL Officers ...Pg 3

How to Critique Yourself (cont.)

A Reminder --- Pg 4

Membership Application ... Attached

December Demo - Rob Silverman



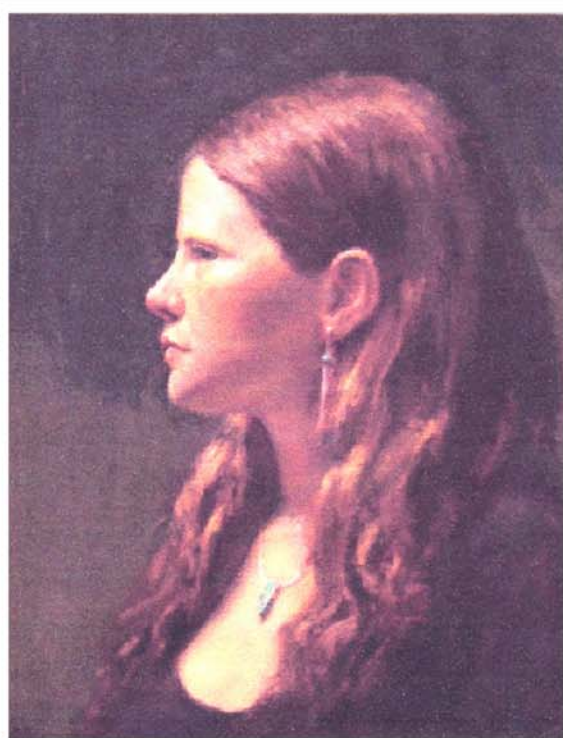
Rob Silverman has recently been featured in *American Artist Workshop Magazine* and *The Art of the Portrait*, the official publication of the Portrait Society of America. Among numerous awards he was given First Prize by the official portraitist of JFK and Family, Aaron Shikler at the Common Thread Portrait Exhibition. His work has appeared at Crosby Street Gallery and Spring Studio Gallery in Soho, Edward Hopper House, and the Lockwood-Matthews Museum, as well as the National Arts Club, Salmagundi Club and in the New York Times among other prominent publications. He has a BA from the School of Visual Arts and has studied with Harvey Dinnerstein, Burton Silverman, Nelson Shanks and David Leffel. He is a member of the PORTRAIT SOCIETY OF AMERICA from whom he was awarded an Honorable Mention in their 2009 Members Competition. He currently teaches Portraiture and

Portfolio Prep at the Northshore Art Academy in Glen Head.

We are indeed fortunate to have Mr. Silverman as the guest for our next demo. It is our intent to bring to our membership artists that can enrich, motivate and inspire our members. As so often quoted "we never stop learning". This is an excellent opportunity to glean from one of the great artists of this time in history.

We look forward to seeing you at this demo - for good company, an excellent opportunity to be inspired - and yes good holiday food.

We will be meeting on the 5th of December (Monday night) at 7:30 PM for a short business meeting followed by the demo. We will be having "special" refreshments in preparation for the holidays. Again, looking forward to seeing you then to kick off the holidays.



November Demo - Howard Rose



Howard Rose was "gift" to us at our November meeting. He was charming, a great teacher and provided many tips and insights for all that attending the meeting.

Ever wonder about painting from photos – we were informed that many great artists do this – it seems to make sense that in mid-January. Is it wise to sit/stand to paint in inclement weather? Thank God for technology and our insights and imagination at work when the picture was taken. Howard suggested that when you do take pictures go early and frequently and capture the essence in your mind to transfer onto the canvas.



The beginning ...

Howard uses three to five colors to create harmony and works simply at first, outlining shapes. The picture on the lower left gives a fine example of starting simply.

He encouraged us to start with shapes – simply and then proceeding, often stepping back to see if you're missing anything. Look for dominant and sub-dominant shapes.

Make use of dark, mediums and lights constructively when drawing trees. Clean your brushes frequently.

Many of Howard's followers attended the demo. It was a wonderful demo. We left with the determination that "I can do that" and were anxious to return to the task of creating.



...the finished product

How to Critique Yourself

Yesterday, Michelle Lonsdale wrote, "I'm currently in my second year studying Fine Arts at a university. I'm working on a research assignment investigating artists' self-critiquing methods. What thoughts, beliefs or rituals do you use while critiquing your work?"

Thanks, Michelle. Your question is such a valuable one. With all the current running off to get things juried and critiqued by others, self-critiquing might seem an unpopular sport. It isn't. The acquired ability to critique oneself is the fuse of great art and the silver bullet of the pros. While all artists work differently, here are a few thoughts:

Quality develops when the artist and the critic are honed into a functioning co-op within the same skull. The "ritual" is to pry the artist away from the critic. The artist can be flamboyant, egocentric and prejudiced. The critic needs to be patient, humble and strict. A split personality may be the price you have to pay to see your work through fresh, unsullied eyes. The operation doesn't hurt--much.

Divorcing yourself from the preciousness of your efforts and seeing your work as it really is takes time and mileage. This means "alone time" in your working area. I'm sorry, but my observation has been that no quality work or strong direction will arise in environments where consultants are readily available.

Happenings of the FPAL - December 2011 - June 2012

December 5 th	*Meeting & Demo - Rob Silverman American Legion Hall, 15 Elizabeth Street, Floral Park - 7:30
March 5 th	*Meeting & Demo - Lillian & Cliff Forziat - "Preparation for Exhibits and Shows; Procedures & Business Know How's" American Legion Hall, 15 Elizabeth Street, Floral Park - 7:30
April 2 th	*Meeting & Demo - TBA American Legion Hall, 15 Elizabeth Street, Floral Park - 7:30
May 7 th	Juried Competition American Legion Hall, 15 Elizabeth Street, Floral Park - 7:30
June 9 th & 10 th	Annual Belmont Stakes Spring Show & Sale - 10 AM - 4 PM Memorial Park, Corner of Tulip & Plainfields Aves., Floral Park
July & August	No meetings

***All meetings in the American Legion Hall will begin at 7:30 PM with a business meeting and refreshments. The demo's will start at 8 PM.**



We are grateful
to the New York
Racing
Association
for sponsoring
our Fall
and Spring
Shows

Membership in the Floral Park Art League is for September 1st, 2011 through August 31, 2012. Membership dues are not like a subscription to a magazine. You must be a paid member to participate in the Spring and Fall Art Show and Sale as well as the Juried Competition in May. It also includes free demo's throughout the year as well as a monthly Newsletter and membership card entitling members for special discounts at both Utrecht and Dick Blick Art Suppliers. If you have not signed up for this year, an application is attached for your convenience.

Detailed directions to the American Legion Hall from the Cross Island Parkway

From Cross Island Parkway - Exit Jamaica Ave., Jericho Tpke., East. Make a right on 25 (Jericho Tpke). Go approximately 1 mile to **S Tyson Ave.** Make a right and go 2 blocks to **Elizabeth Street.** make a left. The American Legion Hall is a white building, #15, directly across from the John Lewis Childs Elementary School's main entrance.

FPAL Officers

President: Robert Rouge
Treasurer: Lillian Forziat
Show Chr. Pat DiComo
Publicity: Open

Vice President: Cliff Forziat
Secretary: Eileen Stattel
Hostesses: Dorothy Webster
Patricia Lee

How to Critique Yourself (continued from page 2)

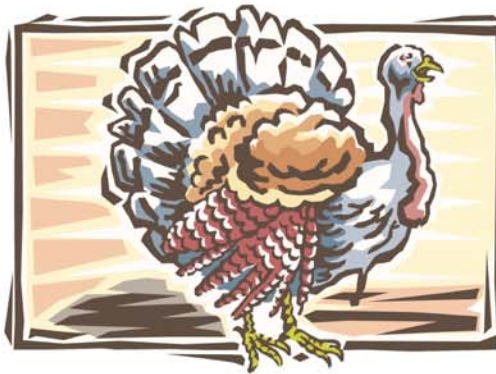
On the other hand, a valuable ploy is to constantly upgrade and rethink standards of excellence, most often done through books and other media. This doesn't mean your style will be influenced by the exposure, but rather you may improve by association with those you admire. "You're only as good as the company you keep," goes the time-honored expression. The mere act of holding onto great works or seeing them in museums magically transfers a sense of timelessness and creative soul. Fact is, you will not generally improve by misguided staring at your own efforts.

Not surprisingly, when you switch from creation mode to critique mode, you tend to lose the magic of inspiration and substitute a more pedestrian, mechanical approach. A checklist is valuable. In serious sobriety you need to write and follow your own list. I use a series of varying questions: Meaningful subject? Strong patterns? Middle tones? Interlocking gradations? General gradations? Echoing shapes? Flowing design? Alluring counterpoint? Lost and found? Focal point? Big and small? Overall simplicity? Complex shapes? Visual depth? Interesting surface? Aerial perspective? Sophisticated color? Natural believability? What could be?

PS: "Think of and look at your work as though it were done by your enemy. If you look at it to admire it, you are lost."
([Samuel Butler](#))

Esoteric: Critical intuition can also be enhanced by minor substance abuse. Cigars and Scotch have been my traditional choices. Since giving up smoking, I've begun to note the critical value of alcohol. "In vino veritas" (In wine there is truth), said Plato. More recently, I've been stalking errors by merely putting on another hat. Right now I'm using an Australian Akubra that makes me feel like an antipodean crocodile wrestler. On and off it goes, sometimes several times an hour.

Printed with permission of Robert Glenn



Have a wonderful Thanksgiving - We all have so much to be grateful for - fun and laughter, favorite memories, simple joys of living!

A Reminder

There will be no meetings in January and February. We have learned from past experience that the weather has often been a deterrent for many of our members during these two months. You will receive the newsletter during these months and notices of any happenings in the art world. If you have anything that you would like to contribute or inform the members of any happenings, please forward them to me and they will be included. I can be reached at e.stattel@hotmail.com, by phone at 516 352-7327 or mailed at 930 N 6th Street, New Hyde Park, NY 11040.